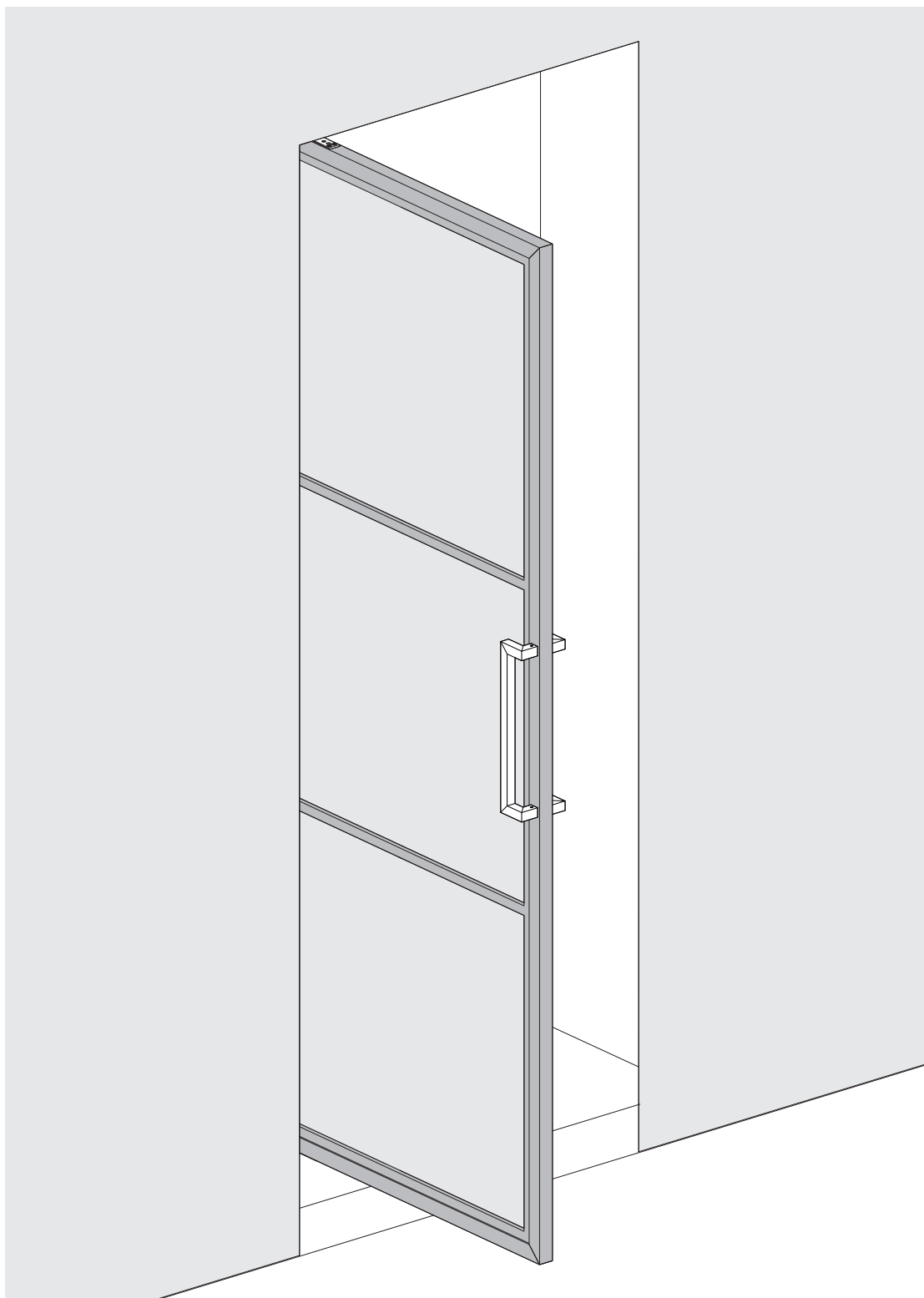
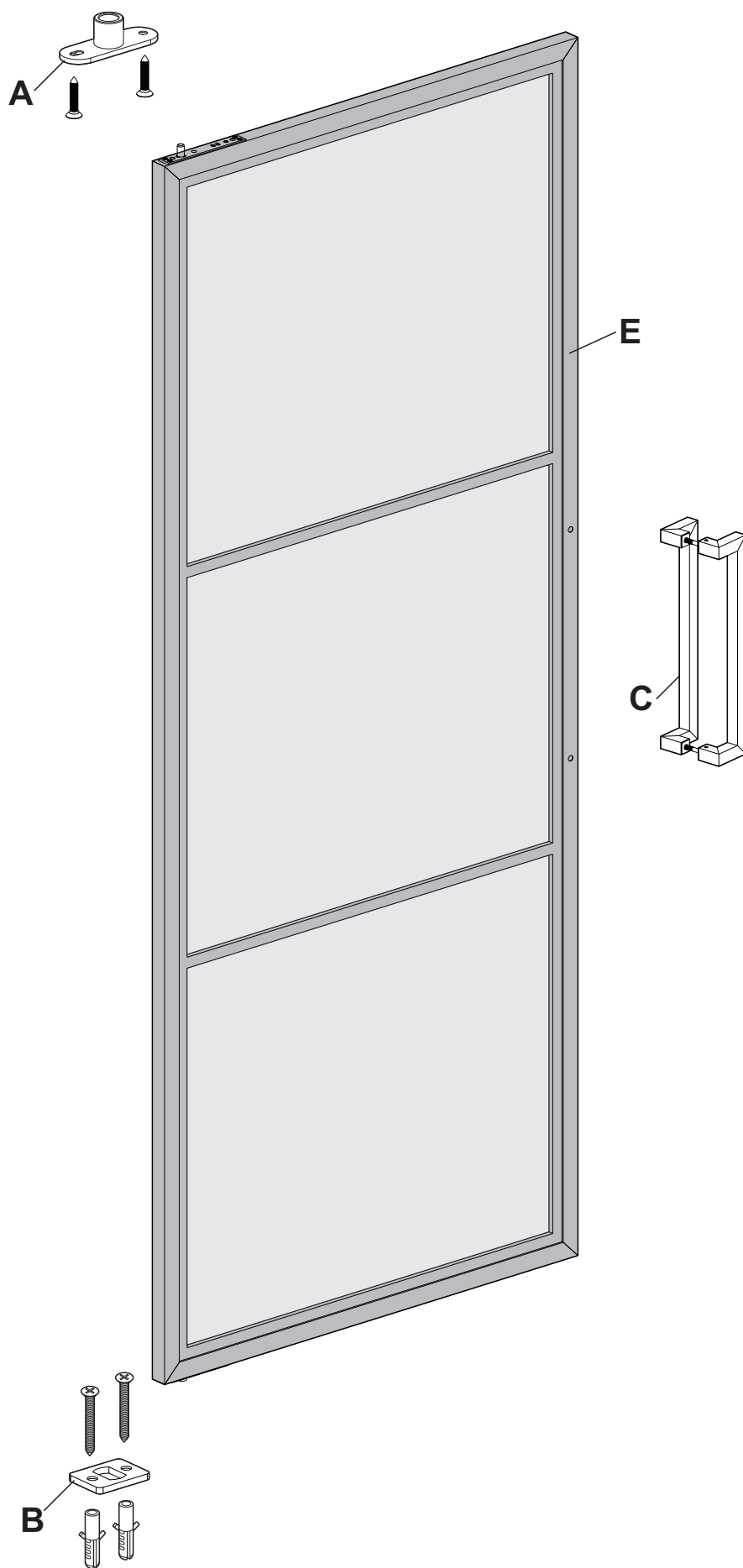


Installation Manual

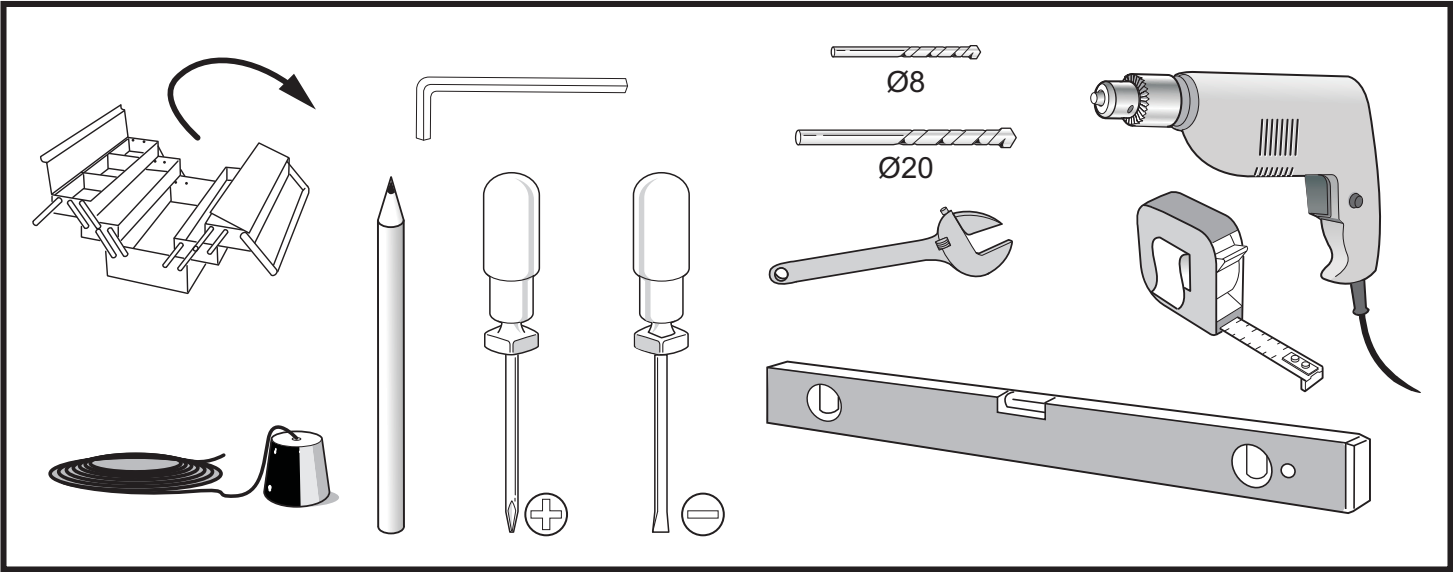


Components list

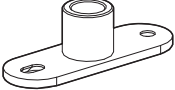



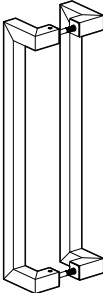
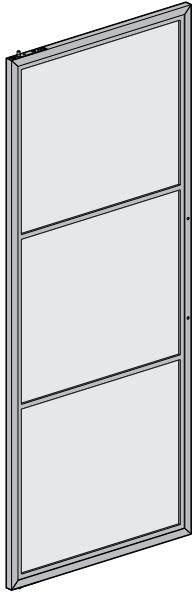
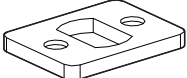


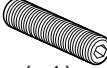



Pre-installation

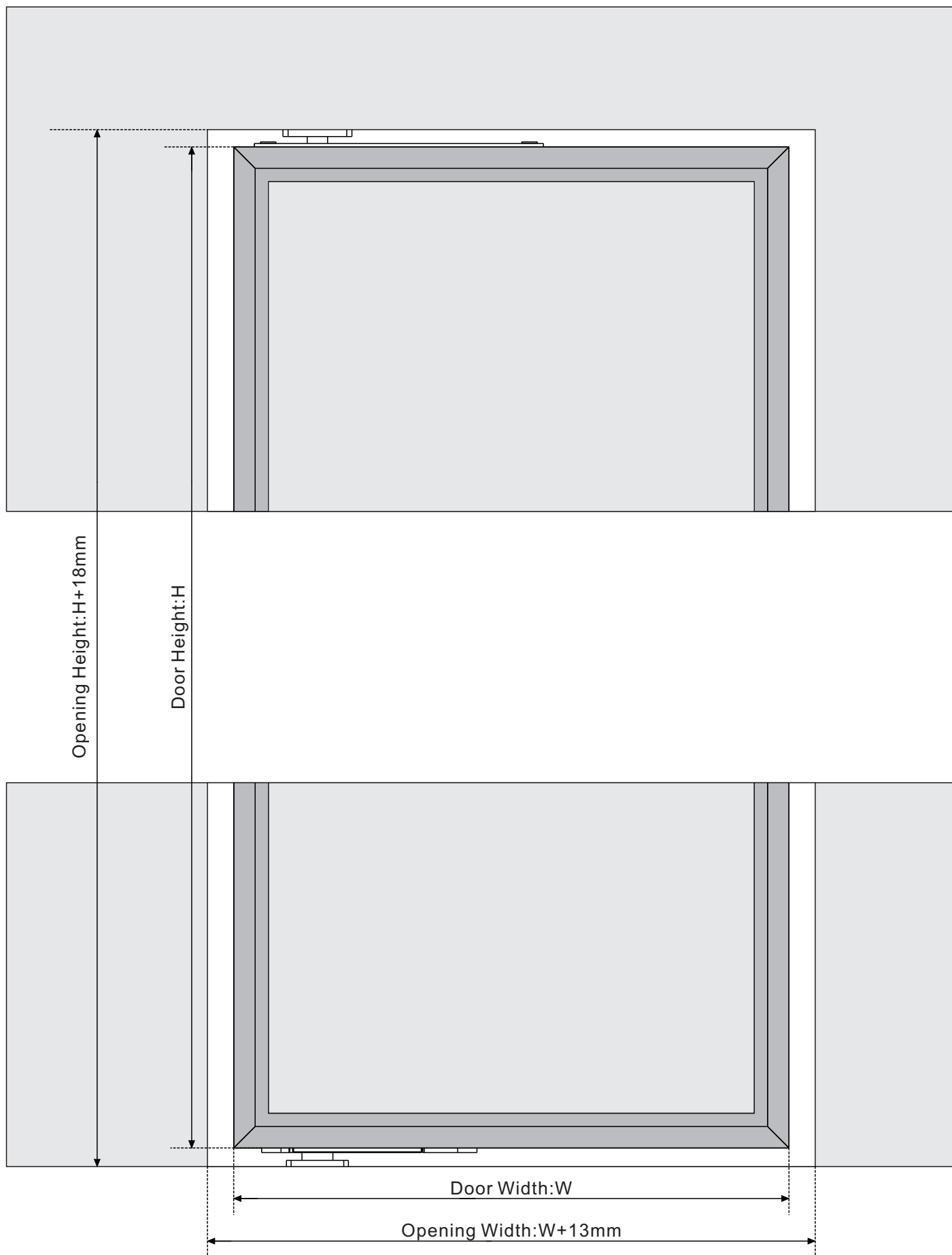
TOOLS REQUIRED



HARDWARE INCLUDED

<div>A</div>  <div>(x1)</div>	<div>Wooden Wall</div>  <div>ST4.8x25(x2)</div> <div>Cement Wall</div>  <div>ST4.8x38(x2)</div>  <div>Ø8 (x2)</div>	<div>C</div>  <div>(x1)</div>	<div>E</div>  <div>(x1)</div>
<div>B</div>  <div>(x1)</div>	 <div>ST4.8x38(x2)</div>  <div>Ø8 (x2)</div>	<div>D</div>  <div>(x1)</div>  <div>(x1)</div>	

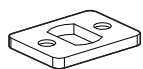
Door preparation



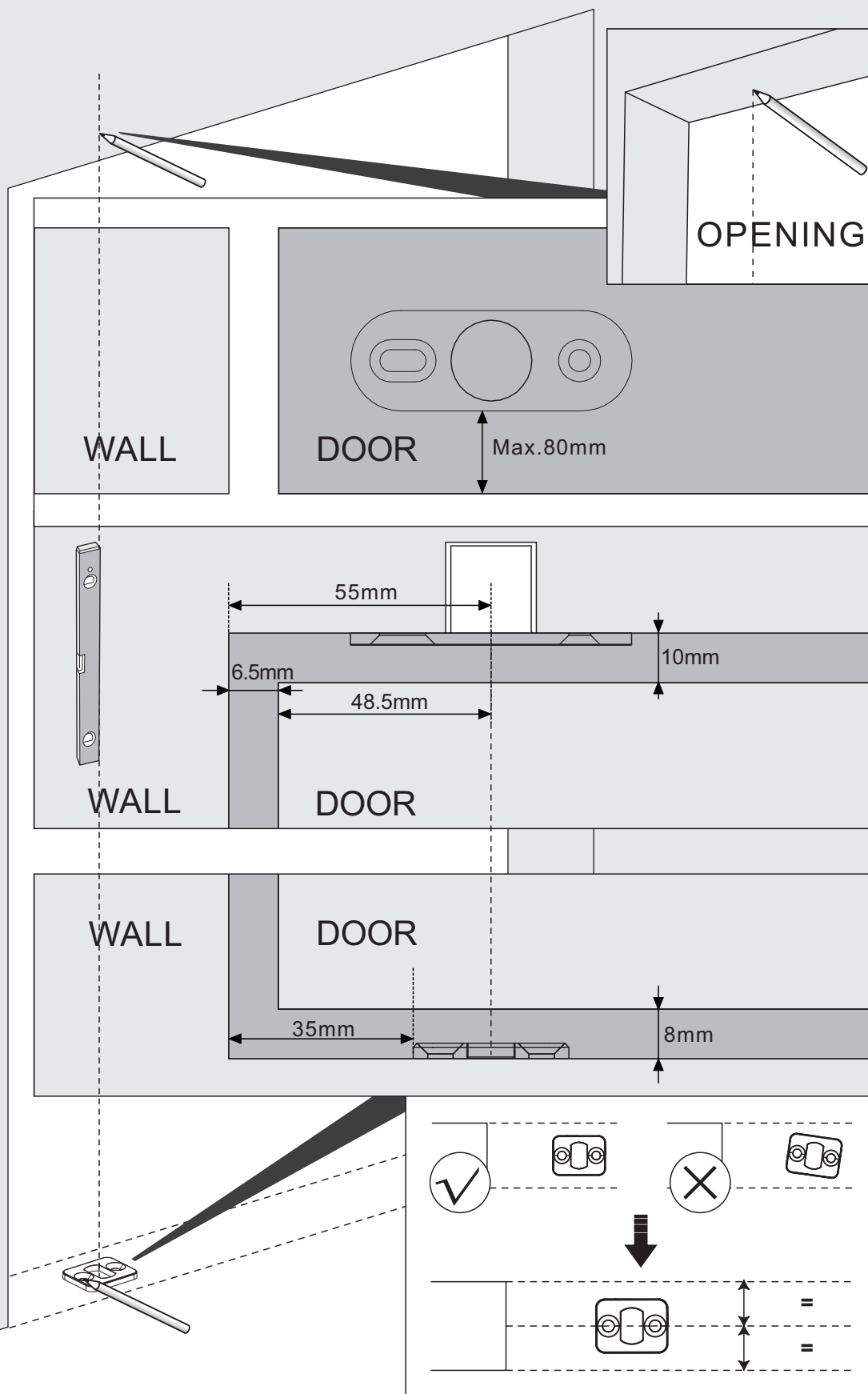
Installation

1 Mark the hole position by pencil.(Door Width \leq 1000mm)

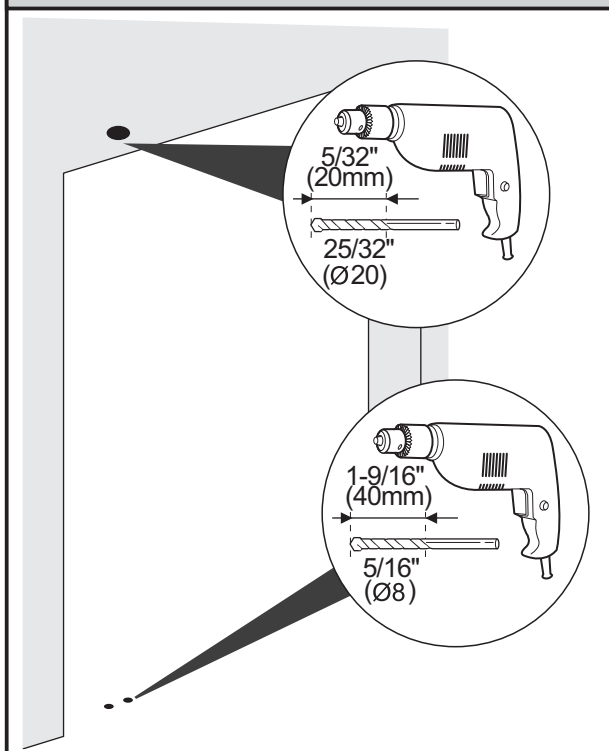
B



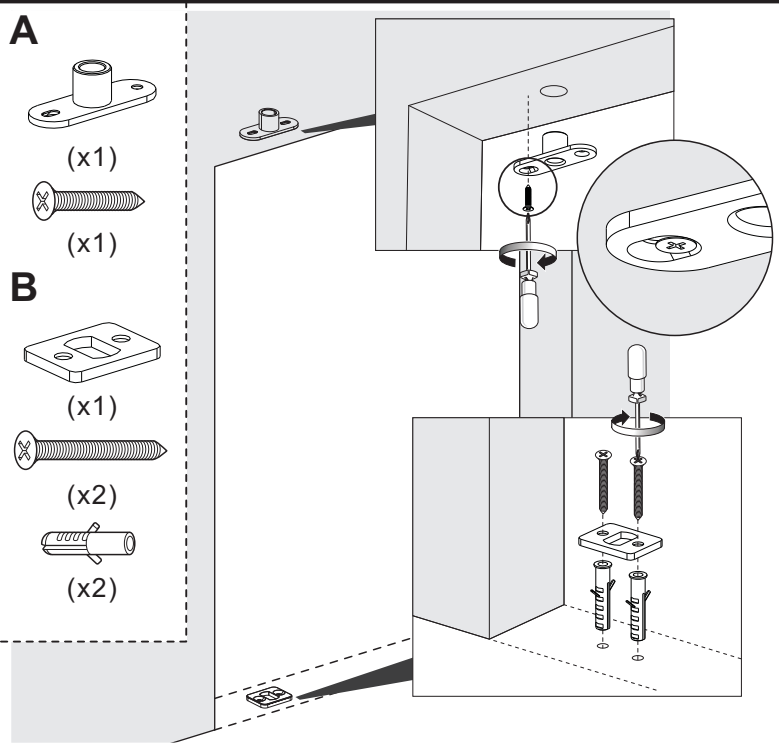
(x1)



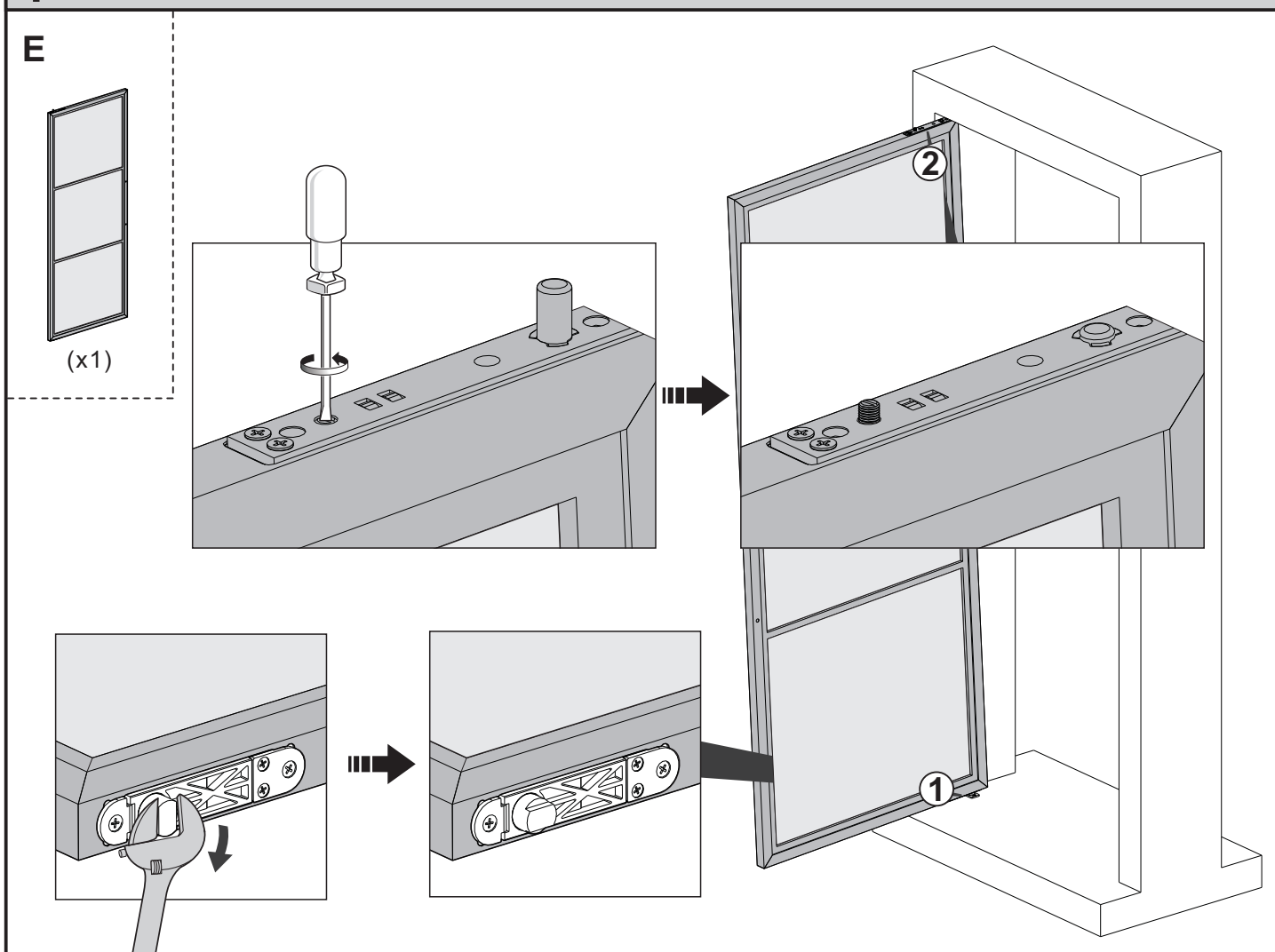
2 Drill holes.



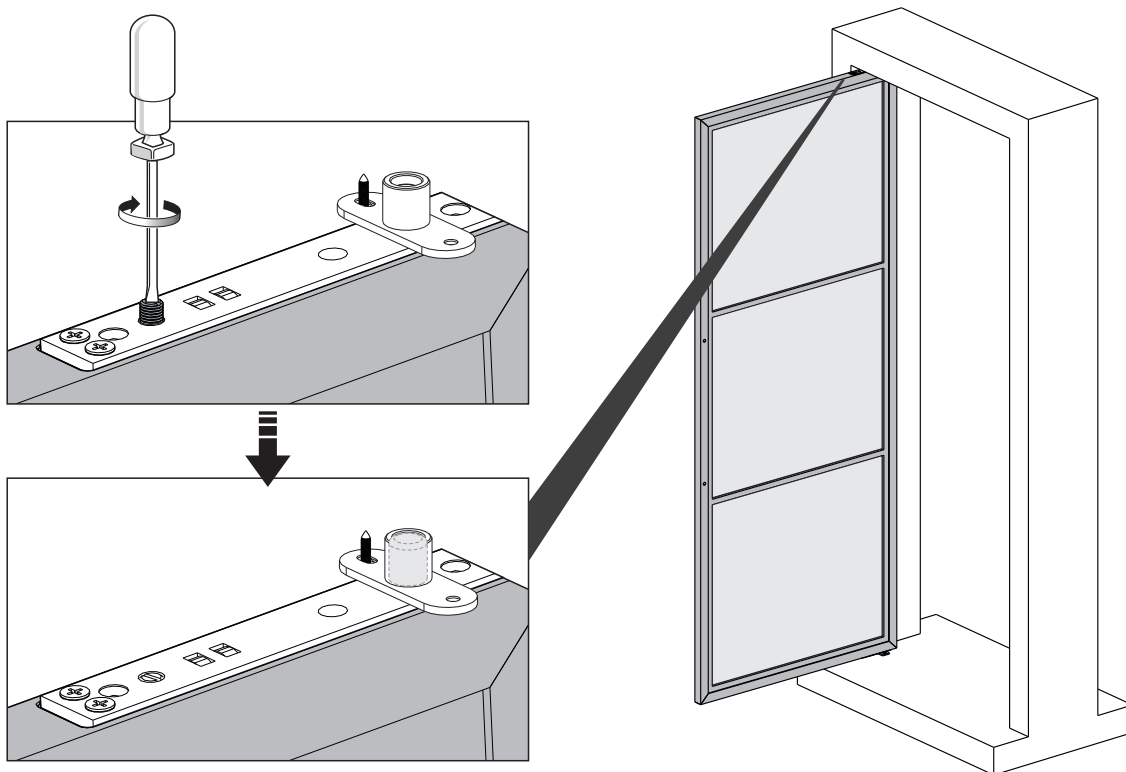
3 Fixing top pivot and bottom plate accordingly.



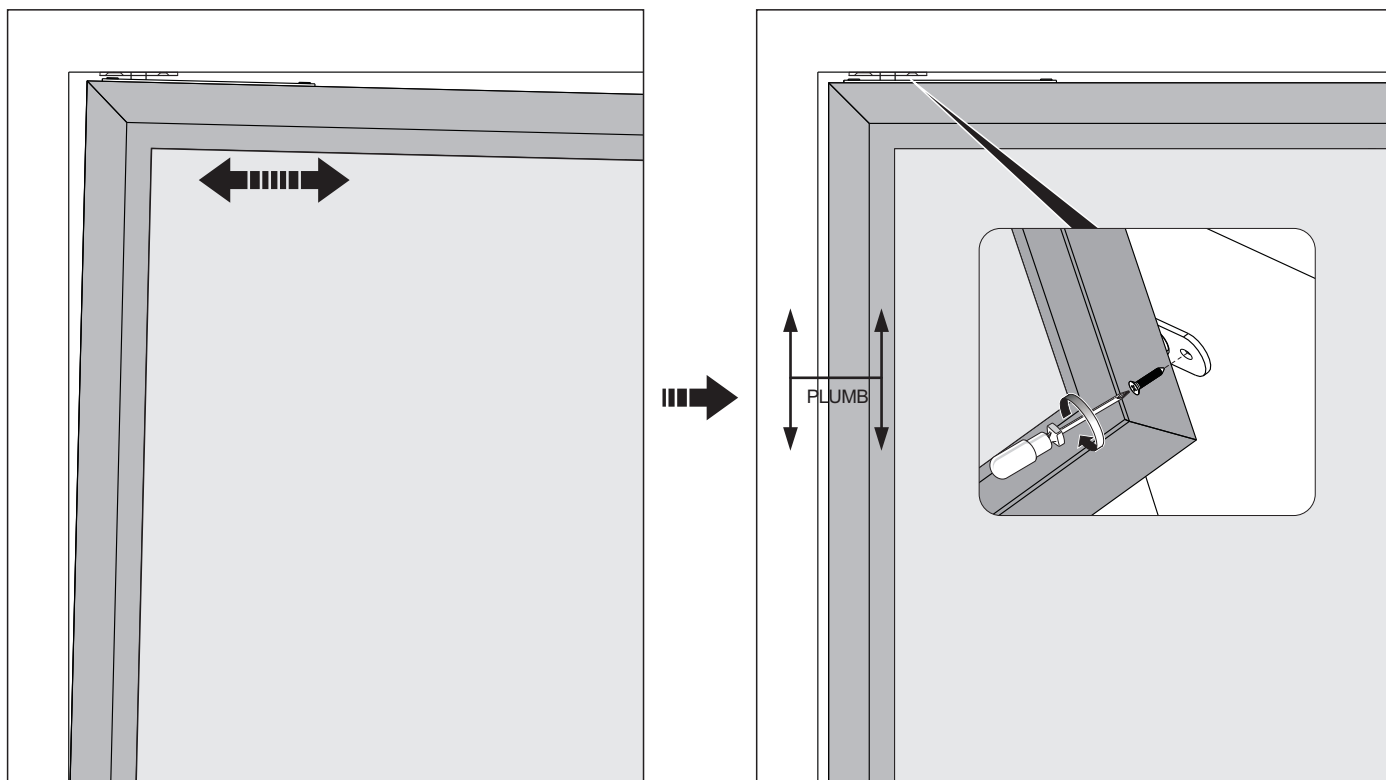
4 Loosen the screws to make pin retract.



5 Fasten the screws to make pin pot out inside the top pivot.

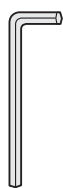


6 Loosen the screw in the slotted hole to ensure door is parallel with wall and fasten both screws.

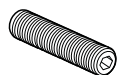


7 Remove the hinge and adjust the opening and closing door force if necessary.

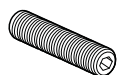
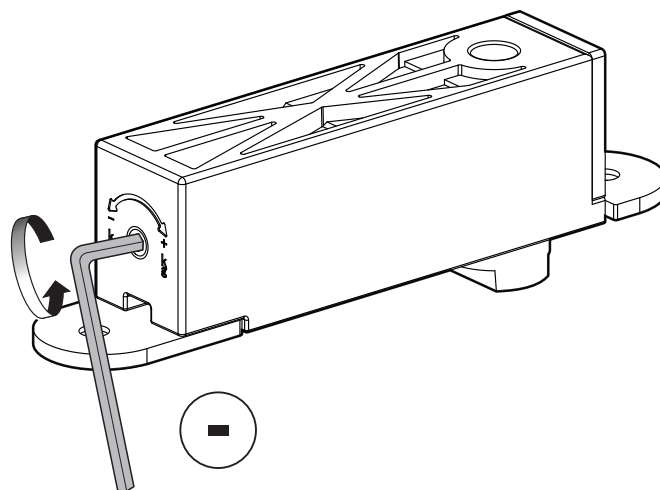
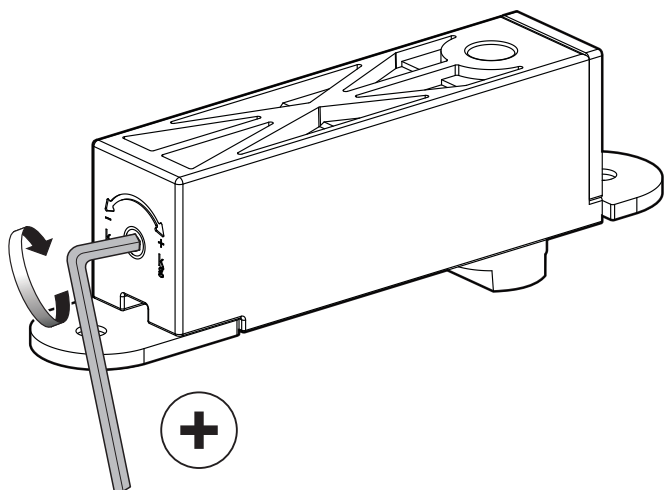
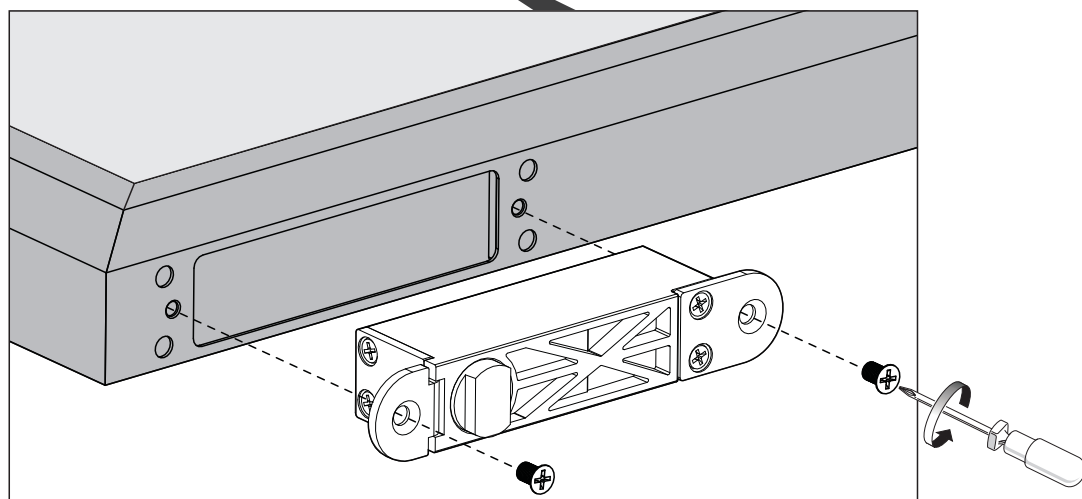
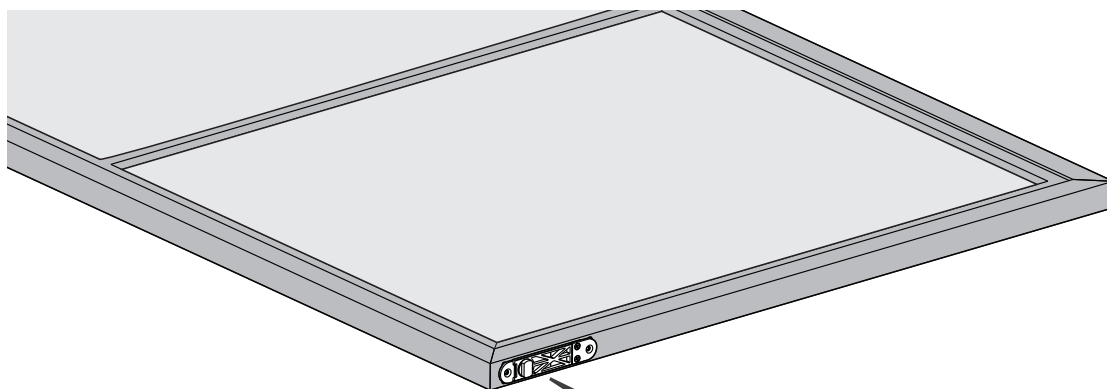
D



(x1)



(x1)



NOTE: If it is too tight to open/close the door, you can change a smaller set screw (included) for comfortable force.

8 Mount a handle

C

